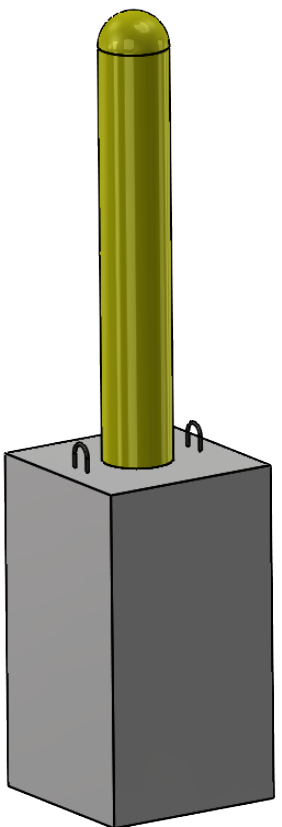
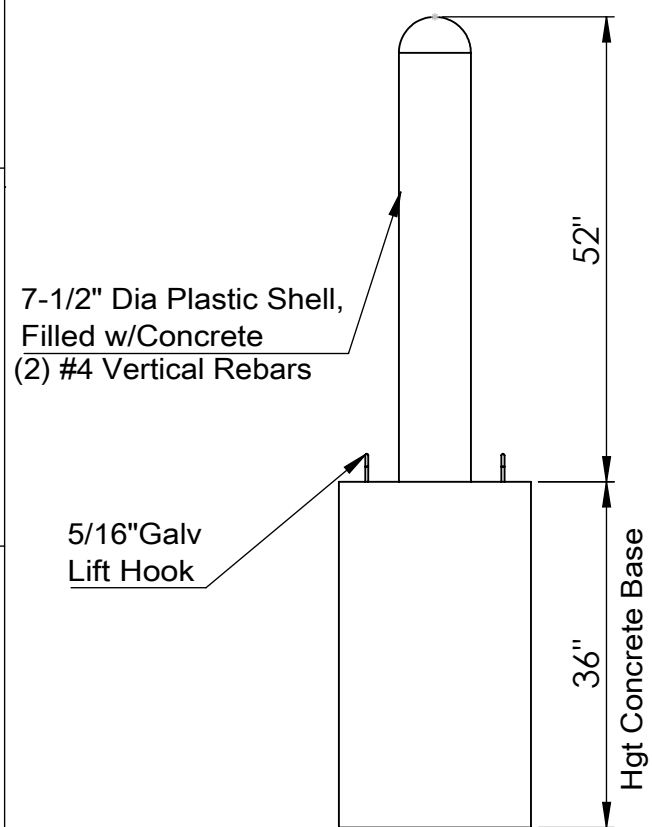


Top View



Isometric View




Side View

Specifications:-

- Concrete Minimum compressive Strength - 4,000 psi@ 28 days
- Type I, or Type I/II Cement
- Concrete Air Entrainment: 4% - 9%
- Steel Reinforcement:
#4 Deformed Bar (Gr. 60) ASTM A-615, or equal
- Approximate Weight = 1300 Lbs

NOTES:			
MATERIAL :			
DRAWN BY:	APPROVED BY:	DWNG DATE: 04.04.2024	TOLERANCE
		CHKD DATE: 04.04.2024	

 <p>EASTERN PRECAST COMPANY, INCORPORATED 2 COMMERCE DRIVE, BROOKFIELD, CT 06804 TEL: 603-232-0406, FAX: 603-606-2450 WWW.EASTERNPRECAST.COM</p>	20" x 20" Precast Base with 7-1/2" Dia. Bollard	
	MODEL NO.	
	LOAD RATING	
	REVISION 1 - DATE	
	REVISION 2 - DATE	